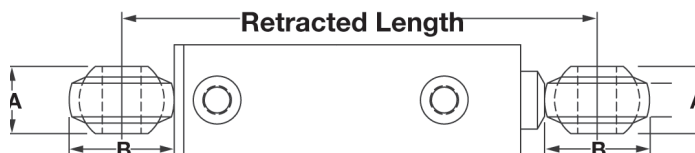


Swivel Ball End Cylinders

• Brand new, WOLVERINE by PRINCE double acting cylinders with swivel eyes. Heavy duty welded construction with thread-in gland design. Top port design with SAE O-ring ports for reliable and leak free connection. Spherical ball end swivel eye mount on both ends to allow for angular misalignment. 3000PSI



1" BORE	SPECIFICATIONS: Ports SAE 6, 1/2" dia. pins.					
	ITEM	Stroke	Rod Dia.	Retracted Lgth.	Shpg.	Price
	904269	4"	5/8"	10"	5 lbs.	\$112.75
	904270	6"	5/8"	12"	5 lbs.	\$118.15
	904271	8"	5/8"	14"	6 lbs.	\$124.20
	904272	10"	5/8"	16"	7 lbs.	\$129.60
	904273	12"	5/8"	18"	7 lbs.	\$135.70

Bore	Ball End Width	Ball End O.D.
	A	B
1"	1"	2"
1 1/2"	1"	2"
2"	1"	2 3/4"
2 1/2"	1"	2 3/4"
3"	1 1/4"	3.13"

1 1/2" BORE	SPECIFICATIONS: Ports SAE 6, 3/4" dia. pins.					
	ITEM	Stroke	Rod Dia.	Retracted Lgth.	Shpg.	Price
	904274	4"	1"	11 1/4"	6 lbs.	\$113.40
	904275	6"	1"	13 1/4"	7 lbs.	\$113.40
	904276	8"	1"	15 1/4"	9 lbs.	\$130.95
	904277	10"	1"	17 1/4"	10 lbs.	\$147.80
	904278	12"	1"	19 1/4"	11 lbs.	\$165.40
	904279	14"	1"	21 1/4"	12 lbs.	\$182.25
	904280	16"	1"	23 1/4"	13 lbs.	\$199.80

2 1/2" BORE	SPECIFICATIONS: Ports SAE 8, 1" dia. pins.					
	ITEM	Stroke	Rod Dia.	Retracted Lgth.	Shpg.	Price
	904289	6"	1 1/2"	13 1/2"	17 lbs.	\$192.40
	904290	8"	1 1/2"	15 1/2"	19 lbs.	\$209.25
	904291	10"	1 1/2"	17 1/2"	21 lbs.	\$226.80
	904292	12"	1 1/2"	19 1/2"	23 lbs.	\$238.25
	904293	16"	1 1/2"	23 1/2"	27 lbs.	\$272.70
	904294	20"	1 1/2"	27 1/2"	30 lbs.	\$301.05
	904295	24"	1 1/2"	31 1/2"	34 lbs.	\$336.15

2" BORE	SPECIFICATIONS: Ports SAE 8, 1" dia. pins.					
	ITEM	Stroke	Rod Dia.	Retracted Lgth.	Shpg.	Price
	904281	6"	1 1/4"	13 1/2"	15 lbs.	\$141.75
	904282	8"	1 1/4"	15 1/2"	16 lbs.	\$157.95
	904283	10"	1 1/4"	17 1/2"	17 lbs.	\$172.80
	904284	12"	1 1/4"	19 1/2"	19 lbs.	\$188.35
	904285	16"	1 1/4"	23 1/2"	22 lbs.	\$218.70
	904286	20"	1 1/4"	27 1/2"	24 lbs.	\$244.35
	904287	24"	1 1/4"	31 1/2"	27 lbs.	\$270.70
	904288	30"	1 1/4"	37 1/2"	32 lbs.	\$301.05

3" BORE	SPECIFICATIONS: Ports SAE 8, 1" dia. pins.					
	ITEM	Stroke	Rod Dia.	Retracted Lgth.	Shpg.	Price
	904296	6"	1 1/2"	14 1/4"	20 lbs.	\$216.00
	904297	8"	1 1/2"	16 1/4"	22 lbs.	\$230.85
	904298	10"	1 1/2"	18 1/4"	24 lbs.	\$234.00
	904299	12"	1 1/2"	20 1/4"	26 lbs.	\$276.75
	904300	16"	1 1/2"	24 1/4"	31 lbs.	\$305.10
	904301	20"	1 1/2"	28 1/4"	36 lbs.	\$303.10
	904302	24"	1 1/2"	32 1/4"	41 lbs.	\$334.15



Clevis End Cylinders



COLUMBUS HYDRAULICS
FLUID POWER IN ACTION.



• Brand new COLUMBUS HYDRAULICS. Double acting cylinders with formed clevis ends. Made in USA.

1" BORE	SPECIFICATIONS: Working pressure 1500 PSI, rod dia. 1/2", ports 1/4" NPT, pin holes 1/2".				
	Retracted				
	ITEM	Stroke	Lgth.	Shpg.	Price
	900287	4"	10 1/2"	6 lbs.	\$156.80
	900288	6"	12 1/2"	6 lbs.	\$141.15
	900289	8"	14 1/2"	7 lbs.	\$149.25
	900290	10"	16 1/2"	7 lbs.	\$163.65
	900291	12"	18 1/2"	8 lbs.	\$170.85



COLUMBUS HYDRAULICS
FLUID POWER IN ACTION.



1 1/2" Bore Cylinders



• Brand new COLUMBUS HYDRAULICS. Welded double acting cylinders with cross-tube ends. Internal gland with snap ring. Made in USA.

1 1/2" BORE	SPECIFICATIONS: Max. 2000 PSI, rod dia. 3/4", ports 3/8" NPT, pin holes 3/4".				
	ITEM	Stroke	Retracted Lgth.	Shpg.	Price
	900684	4"	9 1/2"	8 lbs.	\$150.00
	900685	6"	11 1/2"	9 lbs.	\$159.90
	900686	8"	13 1/2"	10 lbs.	\$169.35
	900687	10"	15 1/2"	11 lbs.	\$179.40
	900688	12"	17 1/2"	12 lbs.	\$189.15
	900766	14"	19 1/2"	12 lbs.	\$202.20
	900767	16"	21 1/2"	13 lbs.	\$207.30
	900768	18"	23 1/2"	14 lbs.	\$216.90